

Bladder Pathway London Cancer Our Next Challenge

John Hines
Pathway Director

Pathway dynamics

- London Cancer System -
- North East – 7 hospitals, 5 MDTs, 2 SMDTs, 2 radiotherapy treatment centres, 2 chemotherapy centres, no radical surgery centre
- North Central & West Essex – 7 hospitals, 5 MDTs, 1 SMDT, 3 radiotherapy centres, 3 chemotherapy centres, 1 radical surgery centre
- Most patients treated locally, but many patients move MDTs and Hospitals



Barking, Havering and Redbridge University Hospitals NHS Trust (BHRUT)

- 1** King George Hospital
- 2** Queen's Hospital

Barts Health NHS Trust (Barts Health)

- 3** Newham University Hospital
- 4** The Royal London Hospital
- 5** St Bartholomew's Hospital
- 6** Whipps Cross University Hospital

- 8** Homerton University Hospital NHS Foundation Trust

- 10** North Middlesex University Hospital NHS Trust

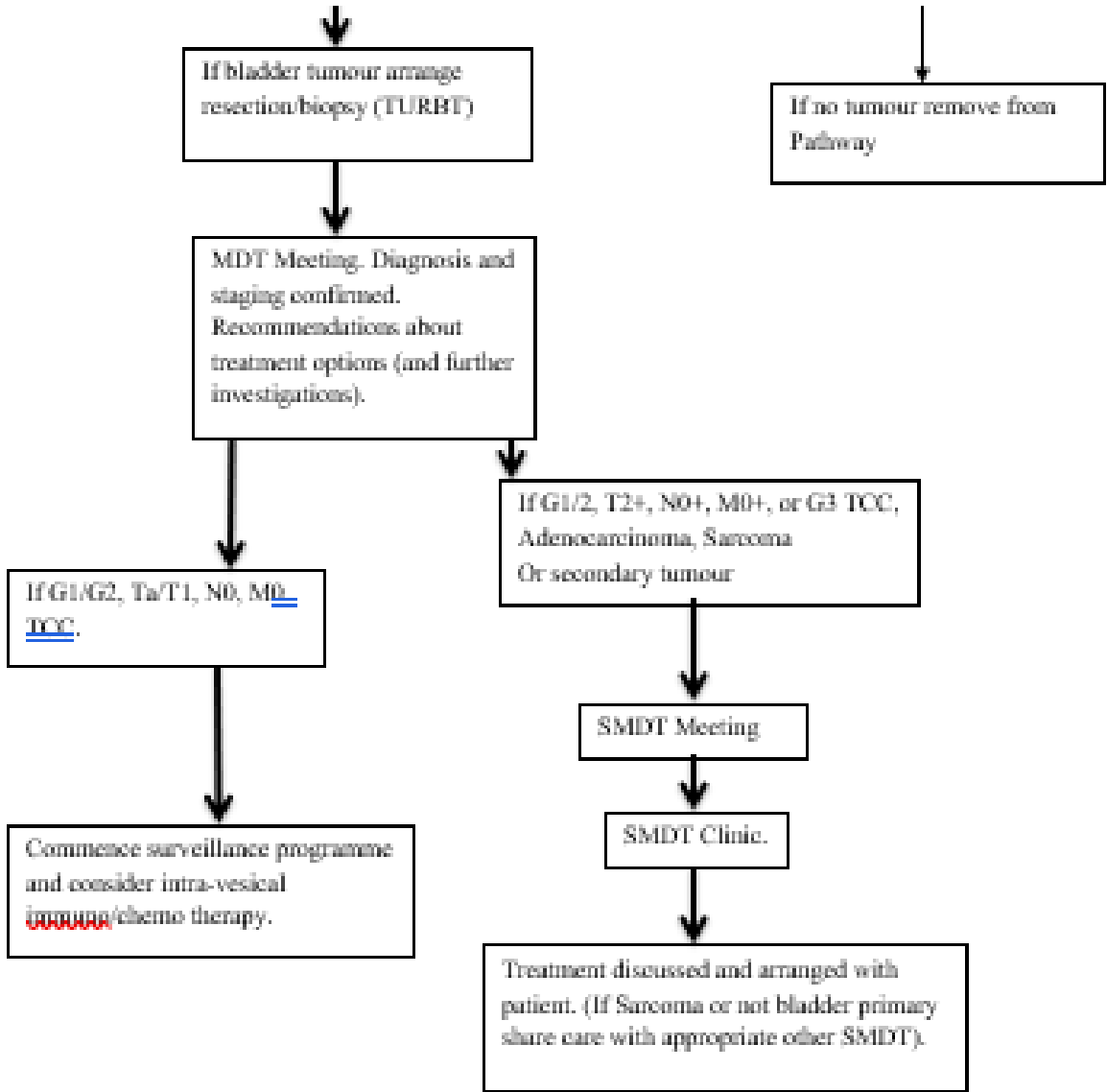
- 11** Princess Alexandra Hospital NHS Trust

Royal Free London NHS Foundation Trust

- 12** Barnet Hospital
- 13** Chase Farm Hospital
- 14** Royal Free Hospital

- 16** University College London Hospitals NHS Foundation Trust (UCLH)

Day 45



Challenge

- Not part of a 62-day pathway
- Very little tracking
- Patients get lost
- 10 consecutive patients – treatment delivery – average 134 days, range 73 – 322.

December 2017 Bladder Cancer Meeting

- All patients to be 'referred' to bladder SMDT at UCLH
- Patients referred by SMDTs at Bart's or BHRUT, or the local NC MDTs (so local EBRT etc can go ahead)
- Tracking – no standardised system

Bladder cancer audit

- November 2018
- Includes all patients
- Retrospective arm – to identify trends, identify new tracking rules
- Prospective arm – against the new pathway standard

- Report in one year.